

Panel Salud: ¿Perfeccionar o partir de cero?

Claudio Lucarelli

TABLE 5—FIRST-DIFFERENCE MODELS OF WITHIN-PERSON CHANGE IN OVERSPENDING 2006–2007,
BY SWITCHING AND OTHER OBSERVED INDIVIDUAL CHARACTERISTICS

| 2006–2007 change allowed to vary with: | Full sample | | Subset with stable health only |
|---|--|------------------------------|-----------------------------------|
| | Switching plans and changes in health | And other characteristics | And other characteristics |
| Switched plans | –298.46 [8.256]*** | –232.98 [7.279]*** | –231.97 [12.884]*** |
| Overspending level in 2006 (\$) | | | |
| Less than 100 | | | |
| Between 100 and 200 | | –174.57 [17.424]*** | –170.37 [21.042]*** |
| Between 200 and 300 | | –222.99 [21.514]*** | –196.72 [36.930]*** |
| Between 300 and 500 | | –313.81 [17.135]*** | –291.67 [21.145]*** |
| Between 500 and 1,000 | | –547.74 [17.285]*** | –517.15 [21.687]*** |
| Between 1,000 and 2,000 | | –1,195.86 [18.646]*** | –1,175.86 [25.325]*** |
| More than 2,000 | | –3,103.24 [206.809]*** | –2,394.51 [434.065]*** |

Source: Ketcham, Lucarelli, Miravete, Roebuck, AER 2012

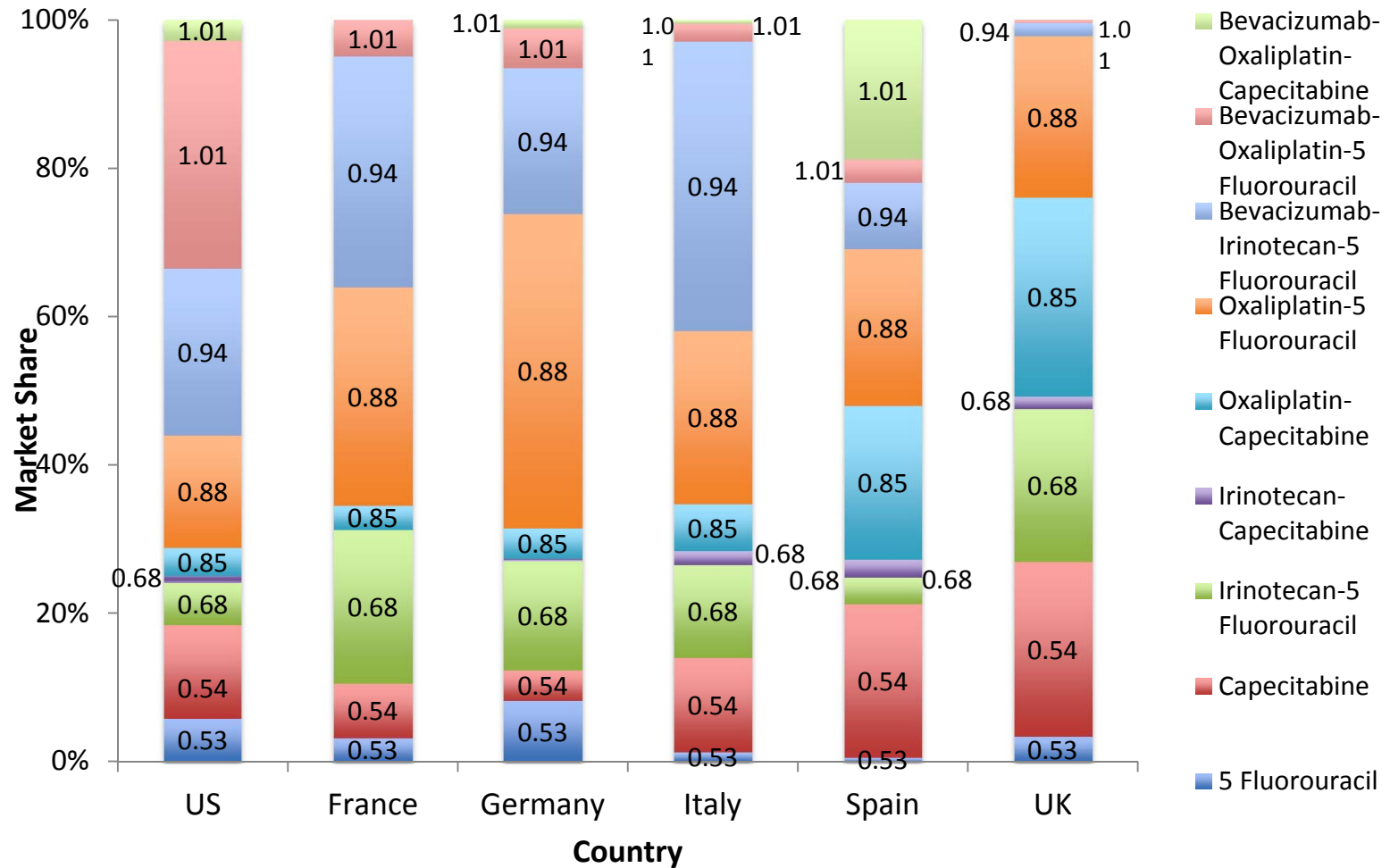
TABLE 5
WELFARE AND POLICY EXPERIMENTS

| | Baseline | Merger | Gap Plans Policy | Two Plan Maximum |
|---|------------------|------------------|------------------|------------------|
| Consumer surplus | | | | |
| Surplus | 1,980,343,388.68 | 1,945,955,388.24 | 1,866,531,012.44 | 1,676,575,822.91 |
| Diff. from baseline | | -1.73% | -5.75% | -15.34% |
| Diff. from baseline—premium fixed | | | -5.12% | -1.83% |
| Diff. from baseline—due to new eqm. premia | | | -0.63% | -13.51% |
| Producer surplus | | | | |
| Surplus | 1,277,592,635.18 | 1,292,299,536.11 | 1,242,258,114.46 | 1,132,617,178.45 |
| Diff. from baseline | | -1.15% | -2.76% | -11.34% |
| Diff. from baseline—premium fixed | | | -3.20% | -23.36% |
| Diff. from baseline—due to new eqm. premia | | | +0.43% | +12.02% |
| Enrollment | 11,838,069 | 11,686,956 | 11,485,345 | 10,452,922 |

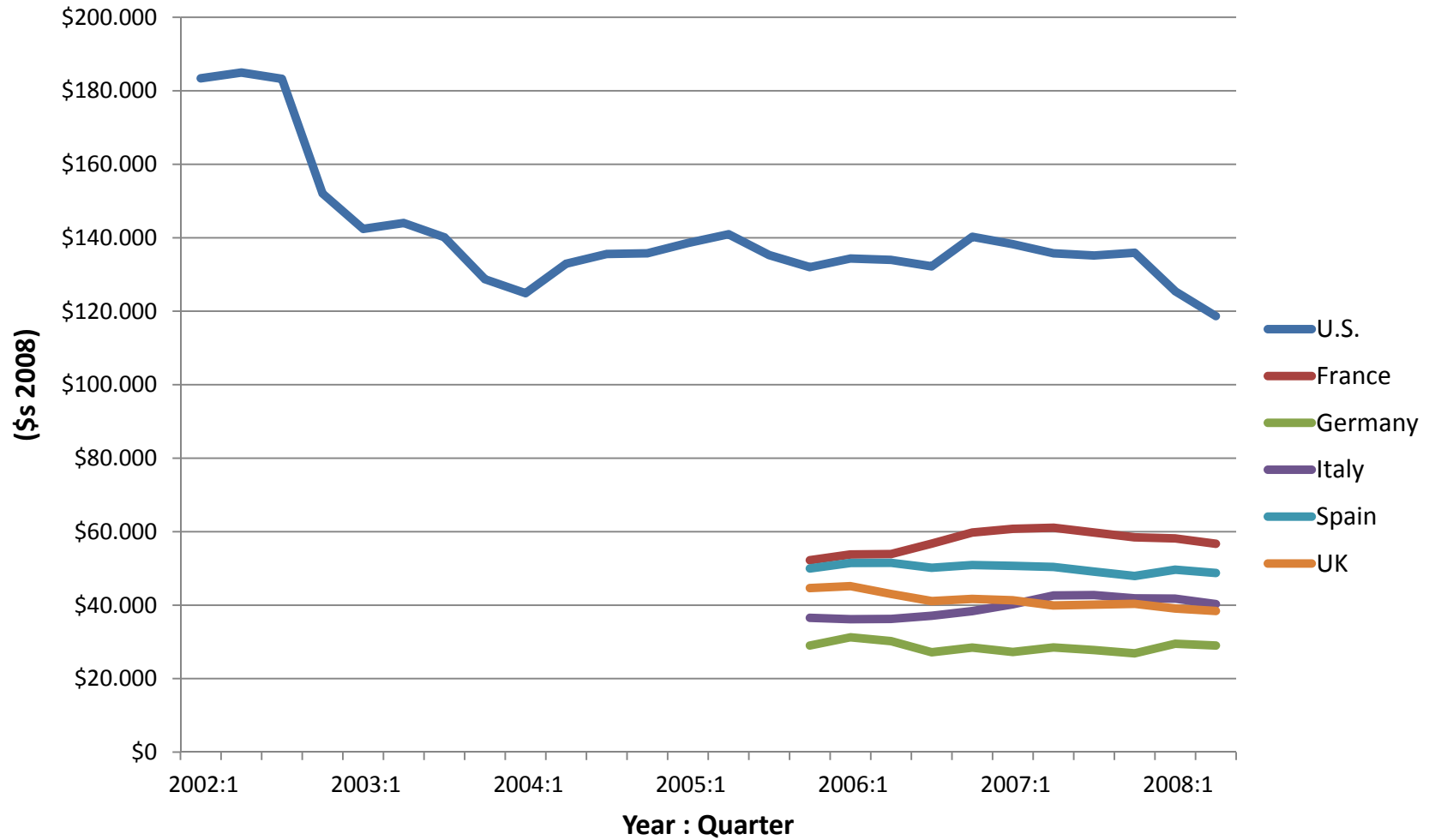
Source: Lucarelli, Prince, Simon, IER 2012

Market share of nine colon cancer regimens in six countries

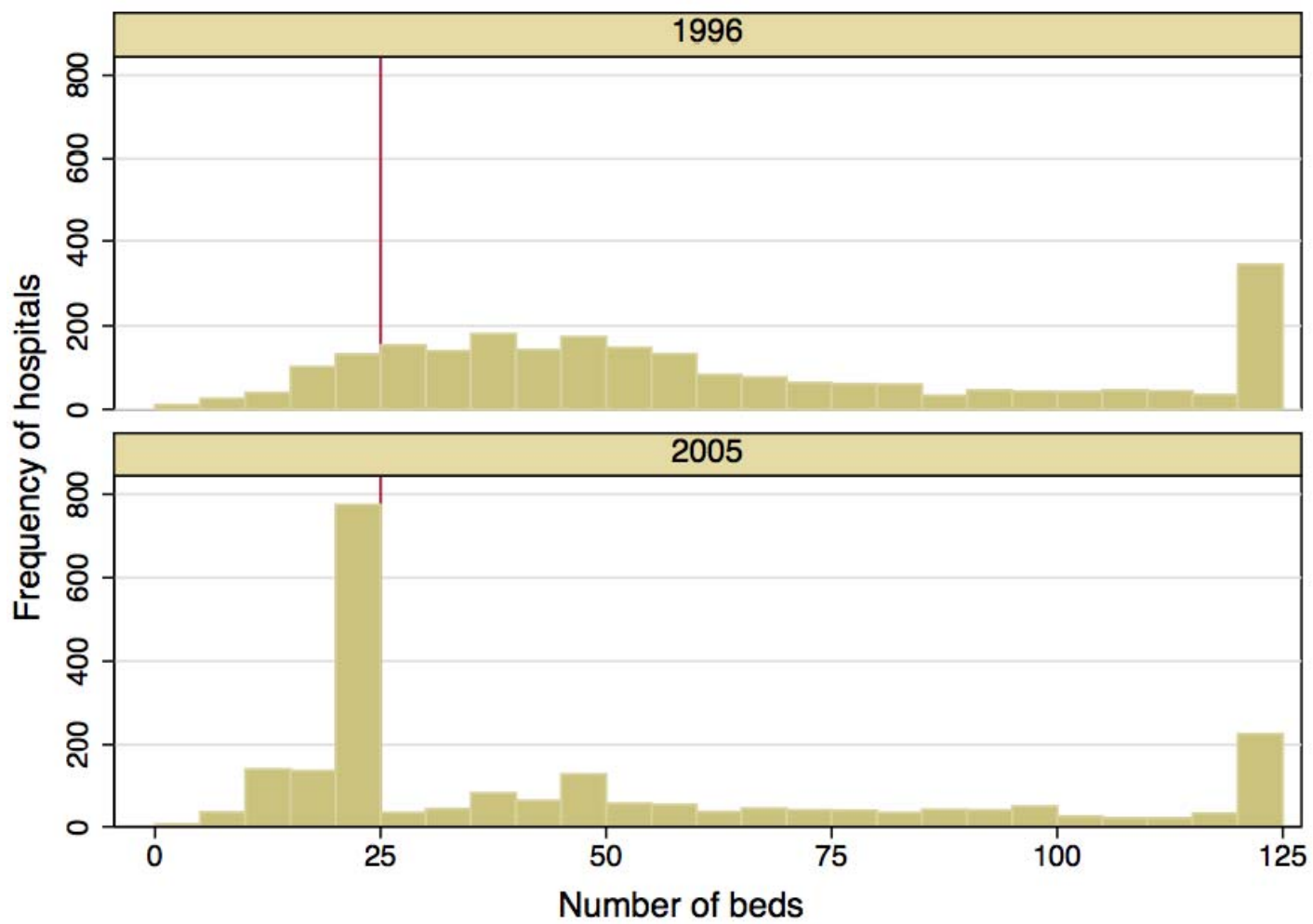
(regimen indicated by expected QALYs)

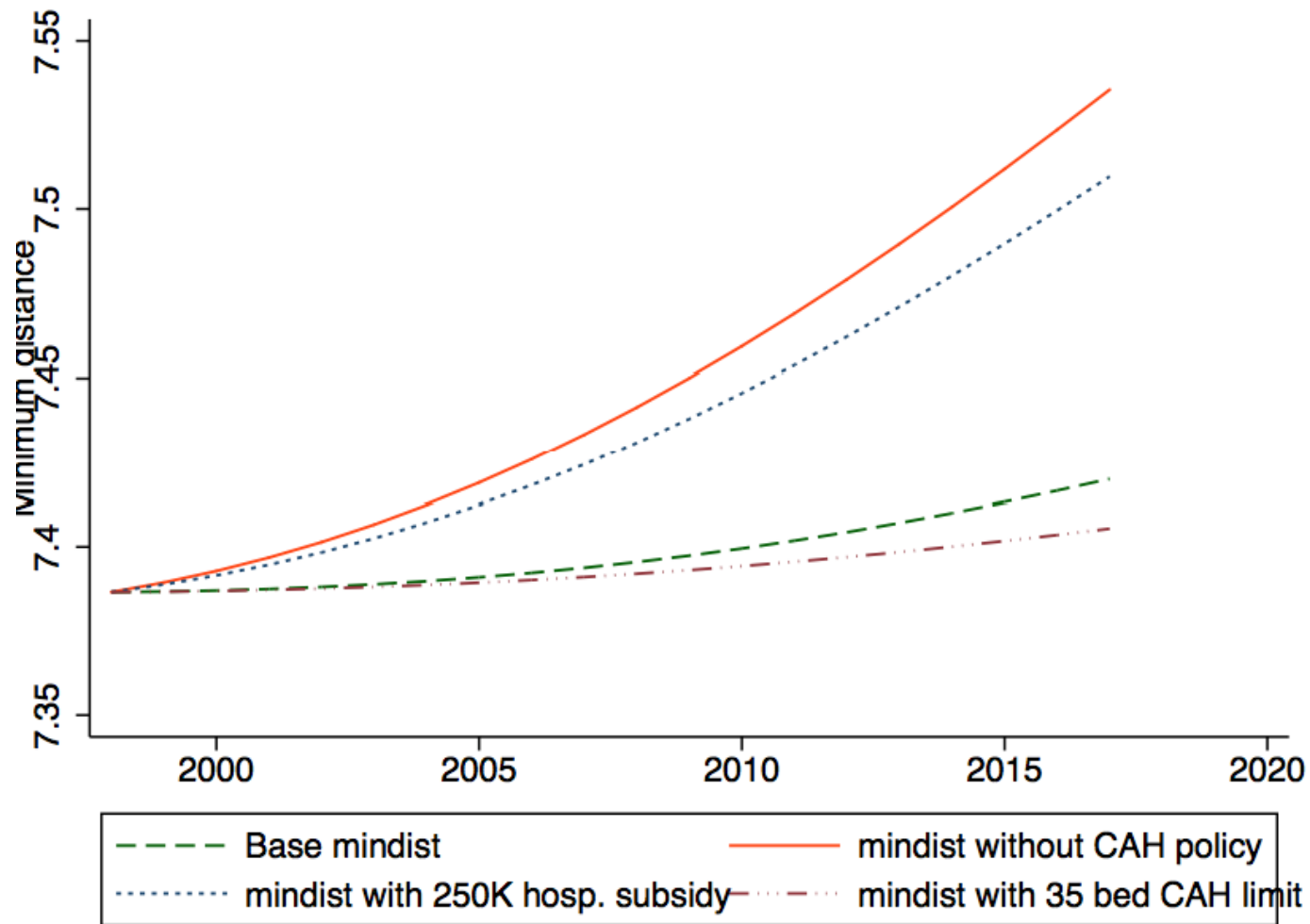


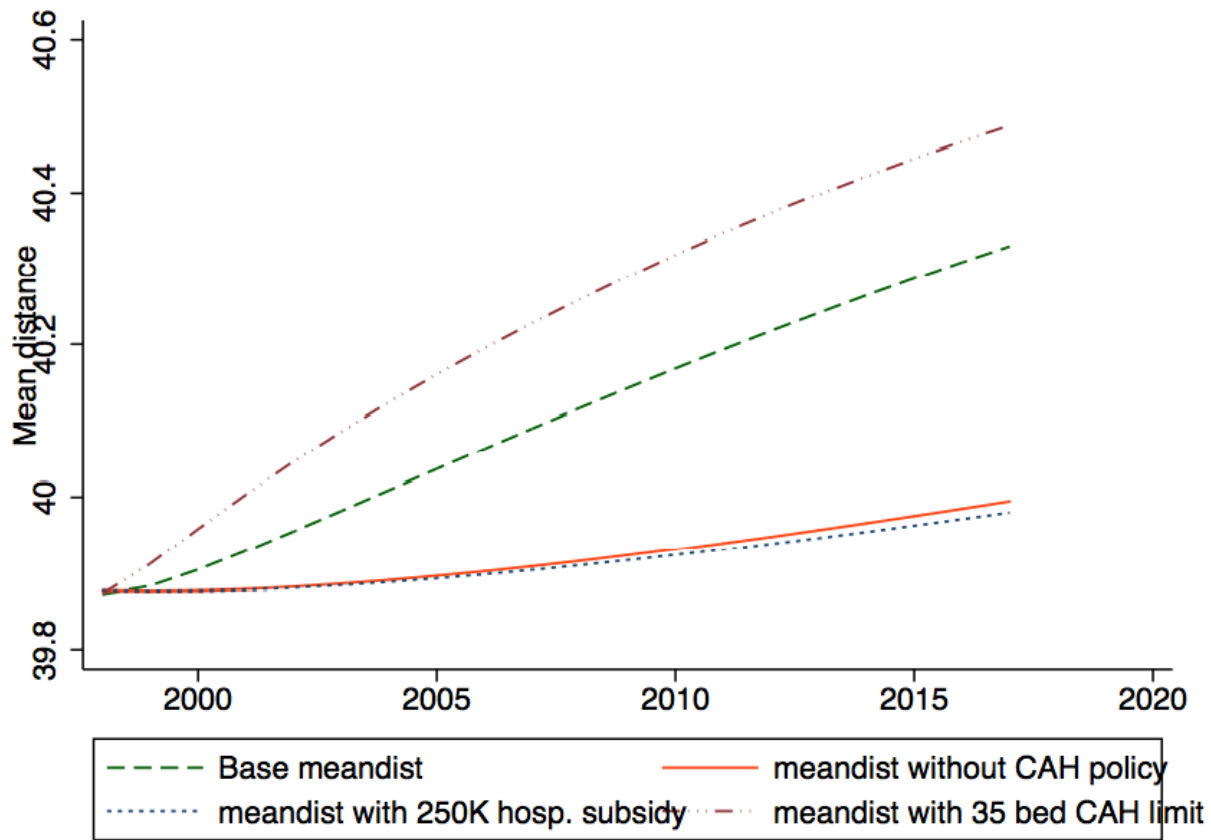
Incremental Spending Per Incremental Expected QALY: 1st-Line Metastatic Colon Cancer Regimens



Source: Ash, Lucarelli, Nicholson, WP 2010







¿Qué no hacer?

- Reaccionar a evidencia anecdótica
- Suponer que la gente no es capaz de elegir
- Suponer que los actores del sector no responden a incentivos
- Community rating!!